

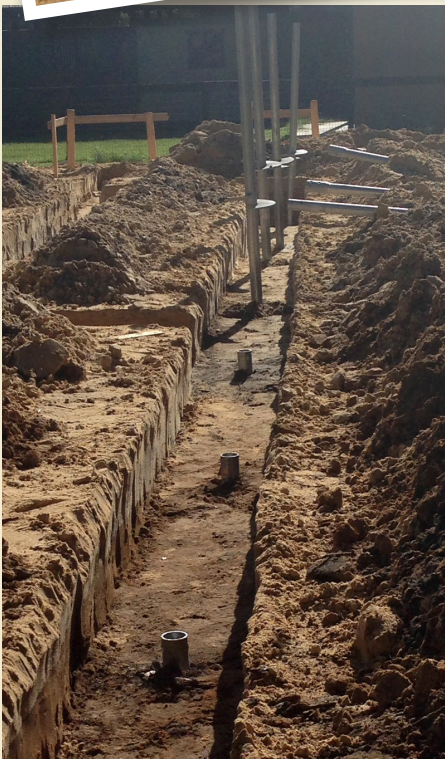
PRE-CONSTRUCTION FOUNDATION SUPPORT

MURPHY RESIDENCE, OCALA FLORIDA

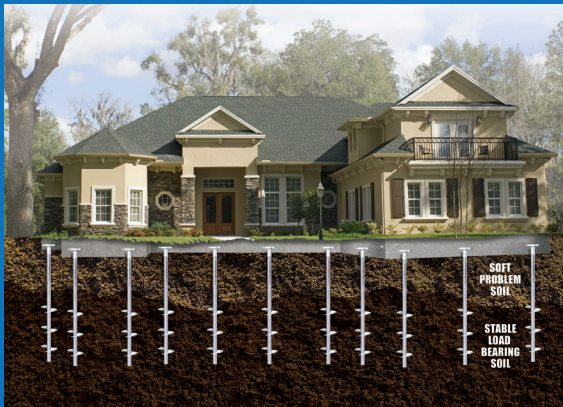
HELICAL PIER SUPPORT

Due to the clayey sand and slightly sandy clay soils found in the soil borings performed at the location, an Earth Contact Product Helical Pile Foundation was recommended. The soils found at the boring locations were moderate to highly plastic and typically exhibit moderate to high shrink/swell behavior with moisture content changes. Generally, these clay soils will swell upon wetting and shrink upon drying thus causing movement of structures placed on them.

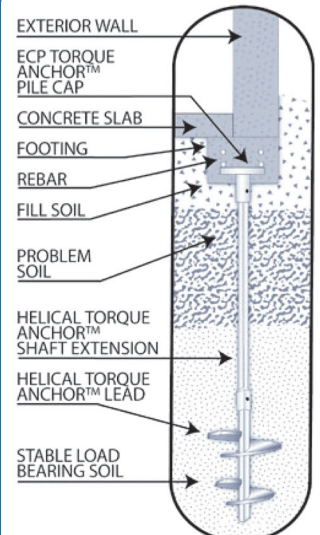
Foundation Services of Central Florida, Inc. worked with engineers to design a 27/8 diameter helical pile with a twin 8'-10' helix plate configuration. The total job time to install 31 piers to and average depth of 14' was only 1 1/2 days.



HOW DO HELICAL PIERS WORK?



Helical Piers are the ideal solution for projects that are built on weak or wet soils and are prone to settlement. Piers can be installed to as little as 10' or as much as over 100'. Helical Piers are embedded into the concrete foundation during footer concrete pouring. Piers may also be attached to existing footers with the use of a wall plate.



HELICAL PIER DETAIL